



**技术参数/TECHNICAL DATA:**

应用材料/MATERIAL EMPLOYED  
阀体/BODY: 钢/Steel  
阀芯/VALVES: 强化硬质钢/Hardened Steel  
密封/SEALS: 丁腈胶/NBR

适用工作环境/OPERATIONAL RANGE  
安装/MOUNTING  
按需/as preferred

温度/TEMPERATURES  
理想工作温度: +40°C ~ +70°C/Ideal operating range between +40°C and +70°C  
最高工作温度: +90°C/Max operating temperature +90°C  
最低/最高环境温度: -20°C ~ +60°C/ Min/Max environment temps -20°C and +60°C

**型号说明/MODEL CODE:**



- ① 材料/Material: SS: 不锈钢/Stainless steel 空白: 碳钢/Carbon steel
- ② 节流阀系列代号/Bidirectional flow control valves series code: VBRF型/VBRF type
- ③ 连接螺纹尺寸/connection thread dimension: BBSP

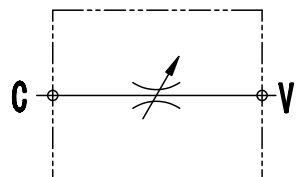
| 型号 /TYPE  | D    | 最大流量 (L/min) | 最大压力 (bar) | A   | B  |
|-----------|------|--------------|------------|-----|----|
| VBRF-G1/4 | G1/4 | 12           | 320        | 62  | 21 |
| VBRF-G3/8 | G3/8 | 30           | 320        | 78  | 26 |
| VBRF-G1/2 | G1/2 | 50           | 320        | 80  | 30 |
| VBRF-G3/4 | G3/4 | 85           | 280        | 100 | 36 |
| VBRF-G1   | G1   | 120          | 250        | 118 | 41 |

注:D处连接螺纹可以根据客户的要求来进行设计  
NOTE:D can be designed according to customer requirements

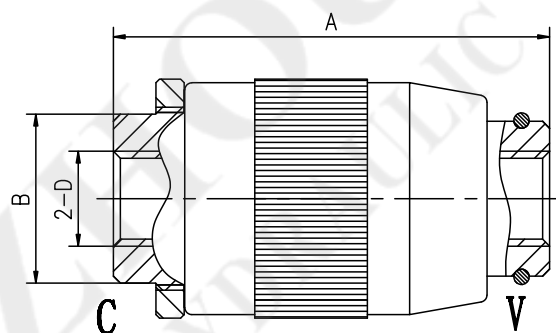
**应用/APPLICATIONS:**

节流阀在进油口和出油口之间可产生压降。该阀没有压力补偿，因而调节流量可以改变压力和液压油粘度的关系。/The flow restrictor valves are able to produce a pressure drop between inlet and outlet.They are not pressure compensated so the regulated flow can change in function of the pressure and of the viscosity.

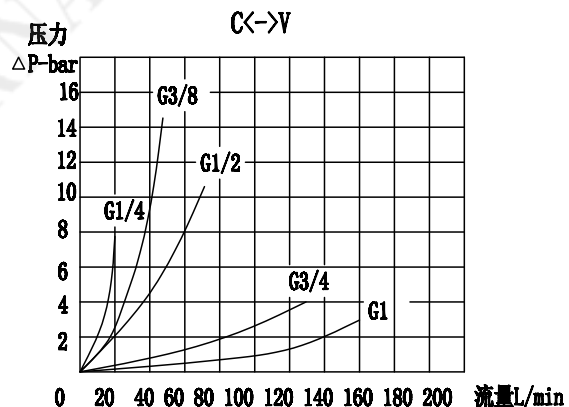
**图形符号/SYMBOL:**



**外形尺寸/OVER DIMENSION:**



**流量曲线图/FLOW DIAGRAM:**



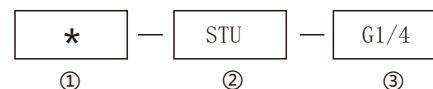
**技术参数/TECHNICAL DATA:**

应用材料/MATERIAL EMPLOYED  
阀体/BODY: 钢/Steel  
阀芯/VALVES: 强化硬质钢/Hardened Steel  
密封/SEALS: 丁腈胶/NBR

适用工作环境/OPERATIONAL RANGE  
安装/MOUNTING  
按需/as preferred

温度/TEMPERATURES  
理想工作温度: +40°C ~ +70°C/Ideal operating range between +40°C and +70°C  
最高工作温度: +90°C/Max operating temperature +90°C  
最低/最高环境温度: -20°C ~ +60°C/ Min/Max environment temps -20°C and +60°C

**型号说明/MODEL CODE:**



- ① 材料/Material: SS: 不锈钢/Stainless steel 空白: 碳钢/Carbon steel
- ② 节流阀系列代号/Bidirectional flow control valves series code: STU型/STU type
- ③ 连接螺纹尺寸/connection thread dimension: BBSP

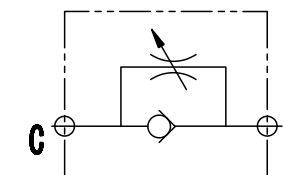
| 型号 /TYPE | C    | 最大流量 (L/min) | 最大压力 (bar) | A   | B   | D  | E  | F       | G  | H  |
|----------|------|--------------|------------|-----|-----|----|----|---------|----|----|
| STU-G1/4 | G1/4 | 12           | 400        | 73  | 72  | 32 | 20 | M20x1   | 5  | 7  |
| STU-G3/8 | G3/8 | 30           | 400        | 82  | 80  | 32 | 25 | M25x1.5 | 9  | 7  |
| STU-G1/2 | G1/2 | 50           | 400        | 98  | 92  | 45 | 30 | M30x1.5 | 9  | 9  |
| STU-G3/4 | G3/4 | 85           | 400        | 112 | 100 | 45 | 40 | M35x1.5 | 10 | 11 |
| STU-G1   | G1   | 150          | 320        | 142 | 122 | 45 | 45 | M40x1.5 | 12 | 15 |

注: 1) F\*处压紧螺母需另行订购。2) C处连接螺纹可以根据客户的要求来进行设计  
Note: 1) The impacted nut at F should be purchased by another way.  
2) C can be designed according to customer requirements

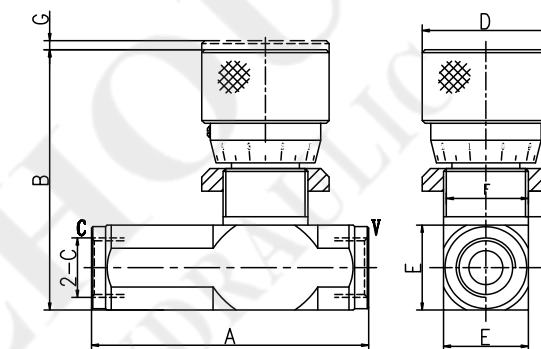
**应用/APPLICATIONS:**

节流阀在进油口和出油口之间可产生压降。该阀没有压力补偿，因而调节流量可以改变压力和液压油粘度的关系。/The flow restrictor valves are able to produce a pressure drop between inlet and outlet.They are not pressure compensated so the regulated flow can change in function of the pressure and of the viscosity.

**图形符号/SYMBOL:**



**外形尺寸/OVER DIMENSION:**



**流量曲线图/FLOW DIAGRAM:**

