

Faster

easier to connect.

**Mobile & Construction
Equipment**

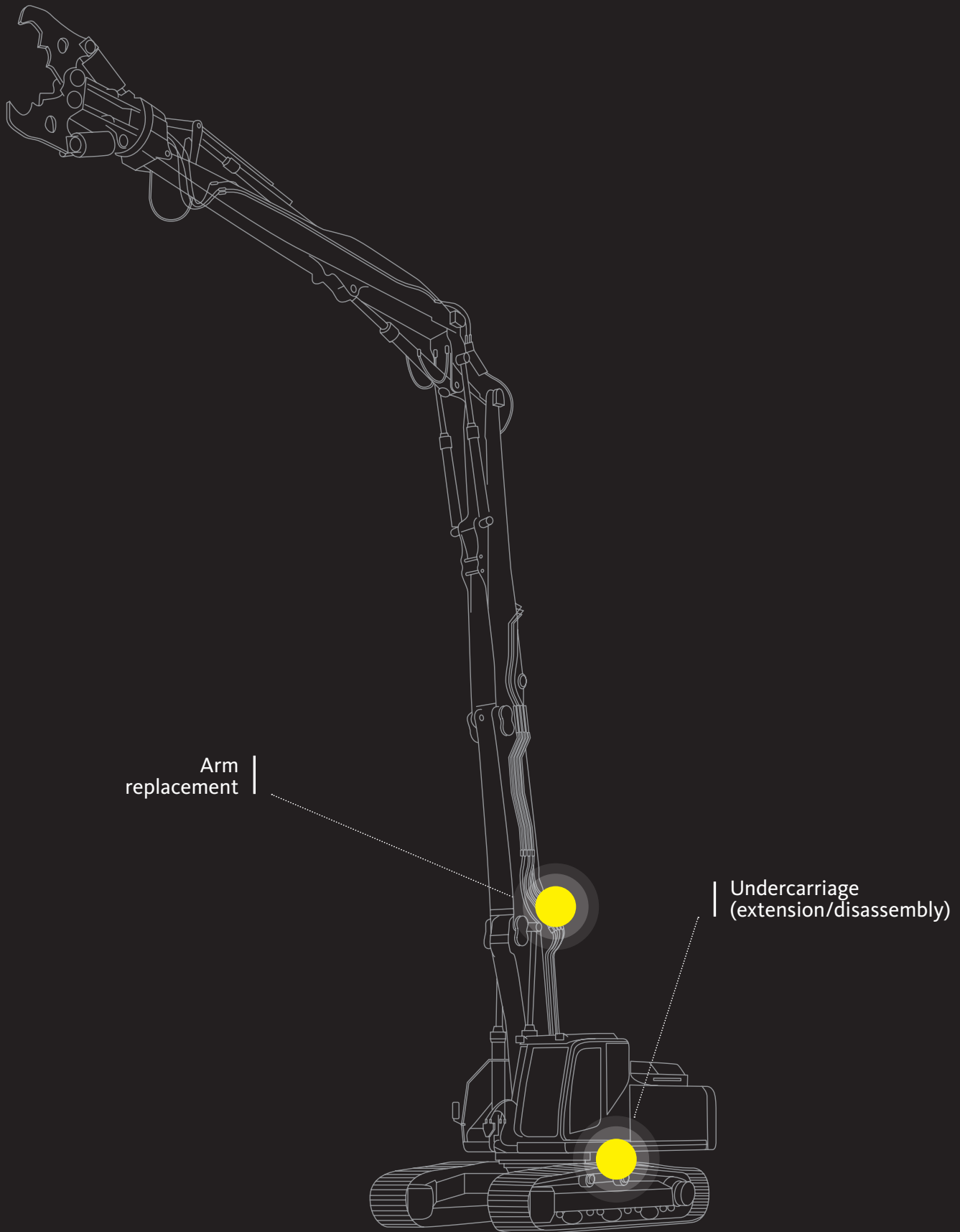


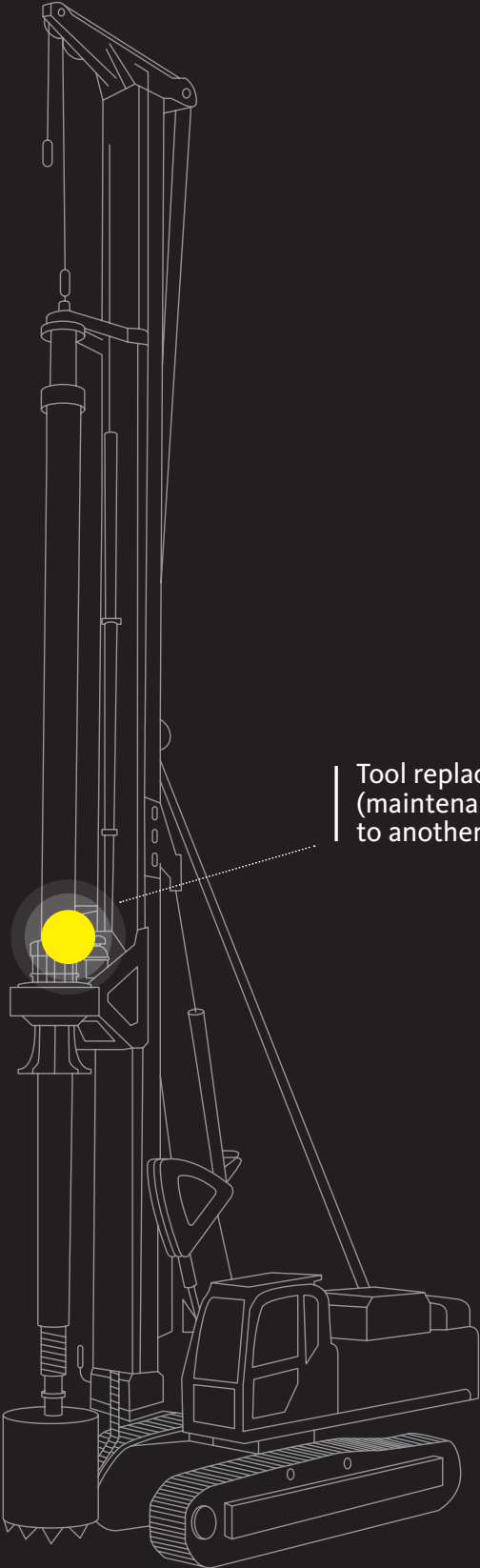
Faster offers a dedicated range of products for Mobile & Construction Equipment, suitable for both Light Equipment, such as Skid Steer and Multiutilities, and Heavy-duty application.

Faster has developed several solutions for the Mobile & Construction Equipment market, including Flat Face couplings, robust and reliable Screw to Connect couplings, Casting solutions with integrated pressure release system and MultiFaster for connection of multiple lines. For applications that are typical

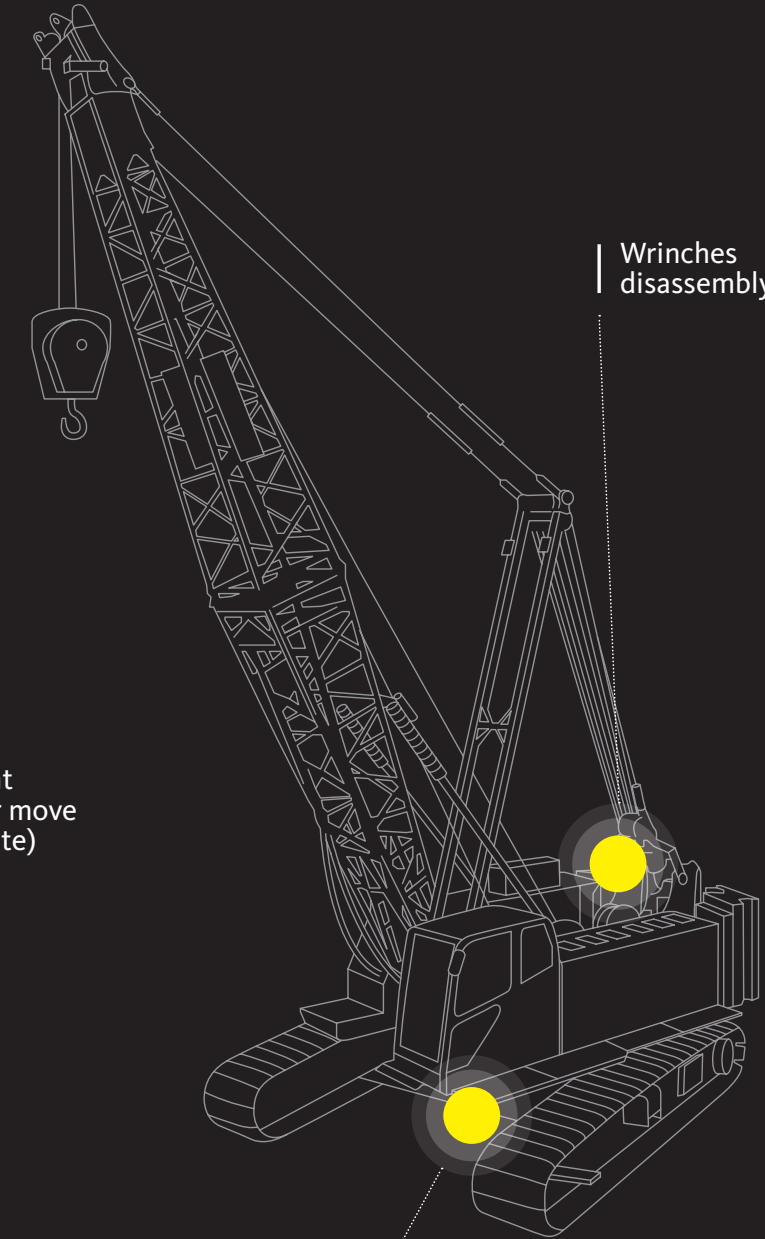
in the construction market, quick-release couplings are required to adapt themselves to work in dusty environments with sand and dirt. It is very important that the seals used are specifically studied and created from polymer blends able to sustain the deterioration and consumption induced by the hostile work conditions.

Heavy Equipment





Tool replacement
(maintenance or move
to another job site)

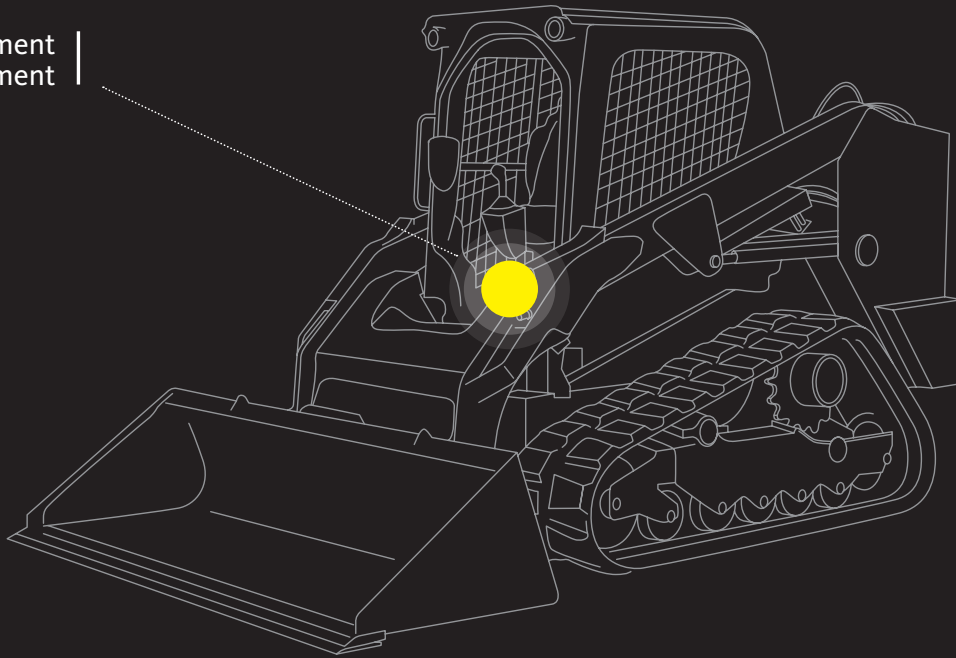


Winches
disassembly

Undercarriage
(extension/disassembly)

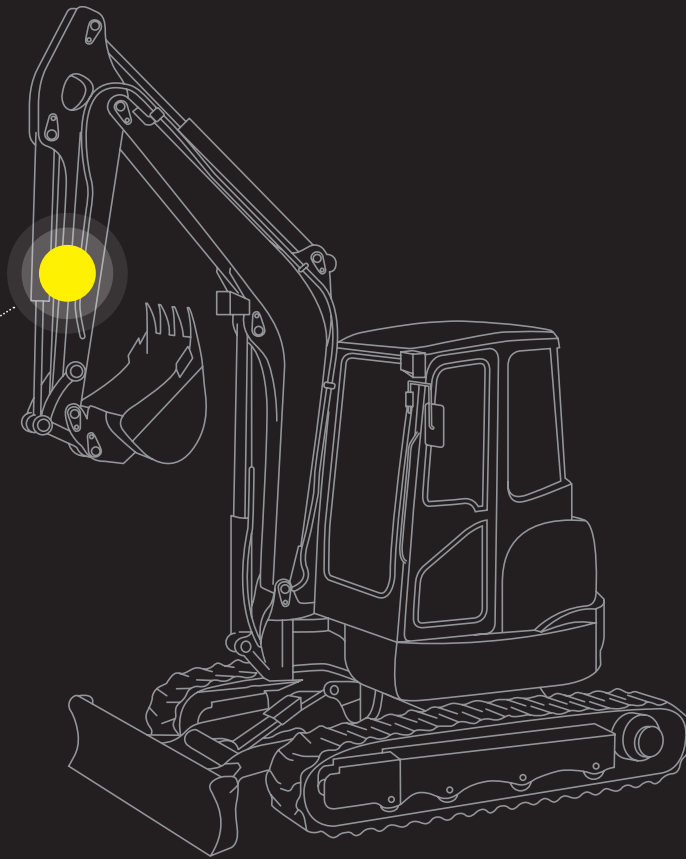
Light Equipment

Attachment
replacement

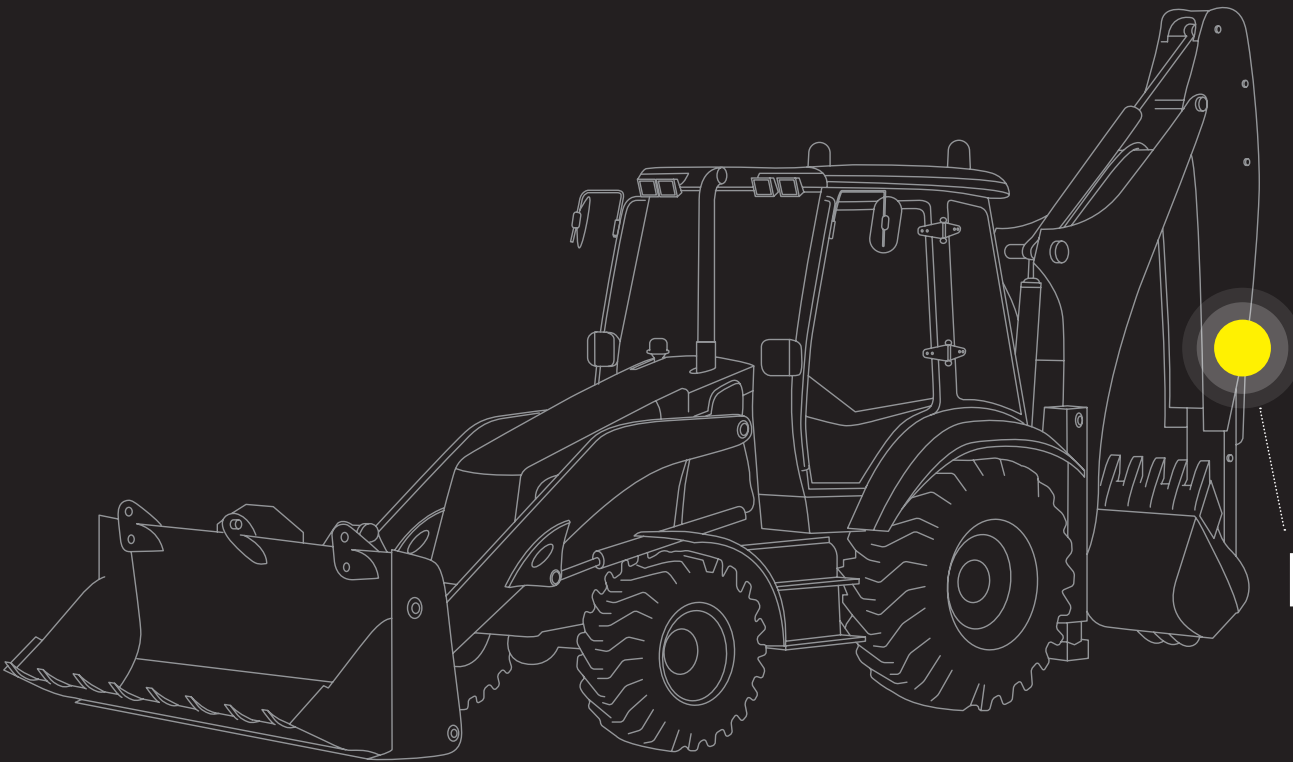




Attachment
replacement



Attachment
replacement



ICONS LEGEND



Connection Under Pressure:
Allowed Male Half up to W.P.



Connection Under Pressure:
Allowed Both Halves



Connection Under Pressure:
Allowed Residual



Connection and disconnection
Under Residual Pressure both halves



Connection Under Pressure:
Allowed Male Half up to W.P.



Connection Under Pressure:
Not Allowed

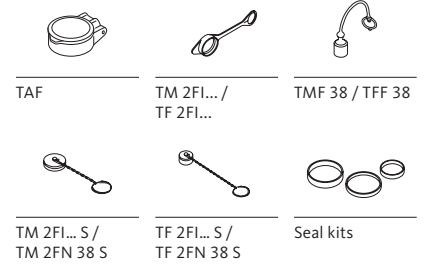
Flat Face

FFH |  |



Flat face Male and Female couplings. The flat valve shut-off system prevents contamination and spillage. Real maximum working pressure of 35 MPa and Zinc-Nickel plating. Available sizes: 1/8", 1/4", 3/8", 1/2", 5/8", 3/4", 1". Interchangeable according to ISO 16028. Size 1/8" has surface treatment in Mate 500 (CrIII) and it is not ISO interchangeable.

Accessories and spares

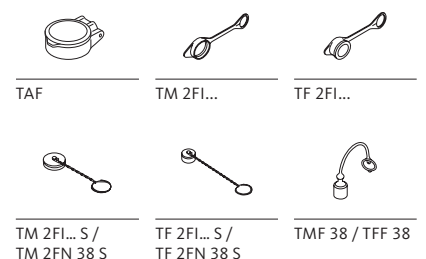


3FFH |  |



Flat face Male and Female couplings. The flat valve shut-off system prevents contamination and spillage. Real maximum working pressure of 35 MPa and Zinc-Nickel plating. Connectable under residual pressure. It is possible to couple either a 3FFH Female half under pressure with a FFH Male half, or a 3FFH Male half under pressure with a FFH Female half. Available sizes: 3/8", 1/2", 5/8", 3/4". Interchangeable according to ISO 16028.

Accessories and spares



FSH |  |



Flat face Female couplings, equipped with sector latching technology. The sector latching system enables to effectively tackle the Brinelling effect, provoked by high frequency impulse pressures.

Real maximum working pressure of 35 MPa and Zinc-Nickel plating.

Connectable under residual pressure in the Male half when coupled with a 3FFH Male coupling.

Available sizes: 3/8", 1/2", 3/4", 1". Interchangeable according to ISO 16028.

Accessories and spares



TAF



TM 2FI...



TM 2FI... S /
TM 2FN 38 S



TMF 38

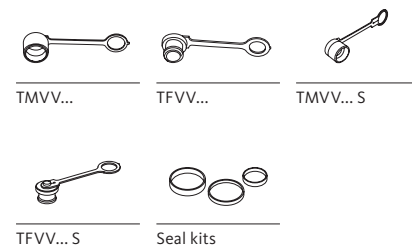
Screw to Connect

CVV |  |



Screw-to-Connect Male and Female couplings, suitable for general purpose applications.
 High resistance to pressure and flow impulses.
 Connectable under residual pressure.
 Available sizes: 1/4", 3/8", 1/2", 3/4", 1", 1-1/2". Interchangeable according to ISO 14541 standard only for sizes 1/4", 3/8", 1/2", 3/4".

Accessories and spares

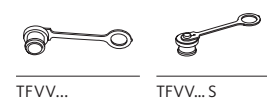


CVLS |  |



Screw-to-Connect Male couplings, suitable for general purpose applications.
 High resistance to pressure and flow impulses.
 Equipped with an additional safety sleeve to prevent accidental disconnections provoked by vibrations.
 Connectable under residual pressure.
 Available sizes: 1/2" and 1". Size 1/2" interchangeable according to ISO 14541 standard.

Accessories and spares



VVS |  |



Screw-to-Connect Male and Female couplings, suitable for applications characterized by high working pressures and peaks. Safe and reliable thanks to the heavy duty internal components. Available sizes: 1/4", 3/8", 1/2", 3/4", 1", 1-1/4", 1-1/2", 2".

Accessories and spares



TMV... S / TMVM...



TFP... / TFV... S / TFVM...



TFV... SS



TMV... SS



Seal kits

OGV |  |



Screw to Connect Male and Female couplings, suitable for Oil & Gas applications. Robust sleeve design, poppet valve and ACME connection thread. Connection under pressure: allowed residual in one of the two halves. Available sizes: 3/4", 1", 1-1/4", 1-1/2", 2".

Accessories and spares



TM OGV... S



TF OGV... S

Screw to Connect Flat Face

FHV |  |



Screw-to-Connect Flat Face couplings, suitable for heavy duty applications. Equipped with a safety sleeve to help preventing accidental disconnections due to vibrations. Equipped with a clear and intuitive visual check system, confirming the connection has occurred (green ring) or not (red ring). No hose torsion during connection and disconnection thanks to the internal bearing system. The Zinc-Nickel plating guarantees a remarkable resistance to corrosion. Thanks to its peculiar design, FHV couplings can also be connected and disconnected entirely by hand, without any tools. Connectable with residual pressure in the Male half up to 35 MPa. Working Pressure up to 53 MPa and flow rate up to 1000 l/min. Available sizes: 3/8", 1/2", 3/4", 1", 1-1/4", 1-1/2", 2".

Accessories and spares



TM FHV... SS



TF FHV... SS



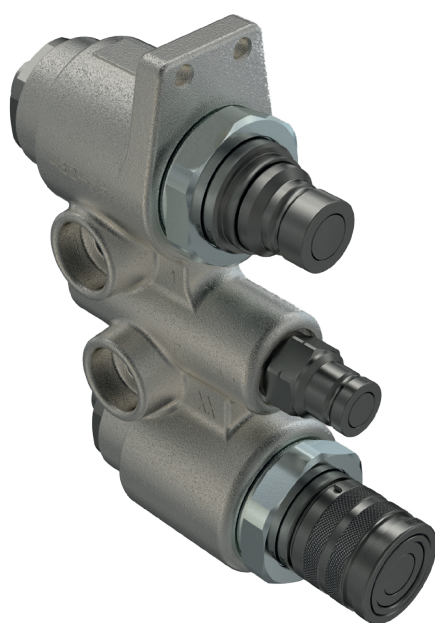
TM-TF FHV...



Seal kits

Castings Solutions

4BD4FH | |



Castings with cartridges for Construction Equipment.

The first cast iron block ever designed to quickly connect and disconnect attachments on skid steers and other light equipment machines.

Designed to connect the circuit with residual pressure on both ends.

The decompression feature allows to connect the circuit with residual pressure on both ends.

1/2" and 3/4" cartridges can both fit into the 4BD4FH block. Higher flow capability is guaranteed when using 3/4" cartridges. Can be equipped with 4FFH or 4FSH cartridges.

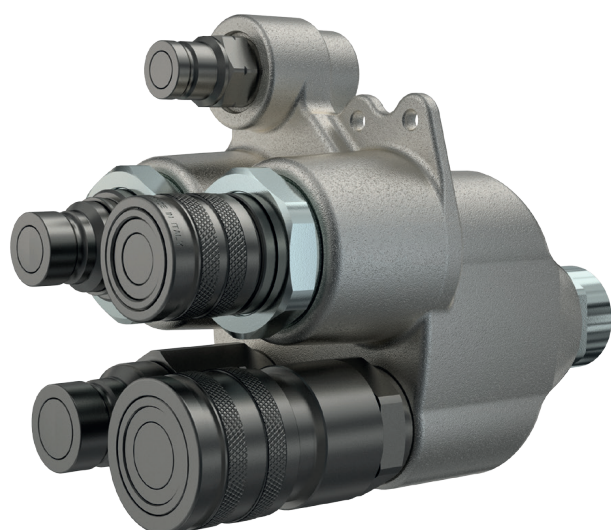
Cartridges share all the benefits of the FFH/FSH couplings technology.

Accessories and spares



Cartridge

5Lines block-coupler | |



5 Lines block unifies two hydraulic lines of different dimensions in one single casting, giving the option to decompress both lines and collect the drained oil in one single line.

The block connects to the machine hydraulic circuit thanks to only two adaptors, and divides the oil flow between the above line and the below line by internal channels properly designed to optimize the flow.

This solution offers a great flexibility to the machine in the use of a larger range of attachments and a very easy installation.

Accessories and spares



Cartridge



Coupling

The cast iron block shown in the picture is for illustrative purposes only.
The shape of each block is tailor designed to meet the manufacturer's dimensional requirements.

MultiFaster

P608



MultiFaster 6 lines, size 1/2".
Working pressure: 25 MPa.
Flow rate @ 0.2 MPa: 70 l/min.

Accessories and spares



KIT2FN

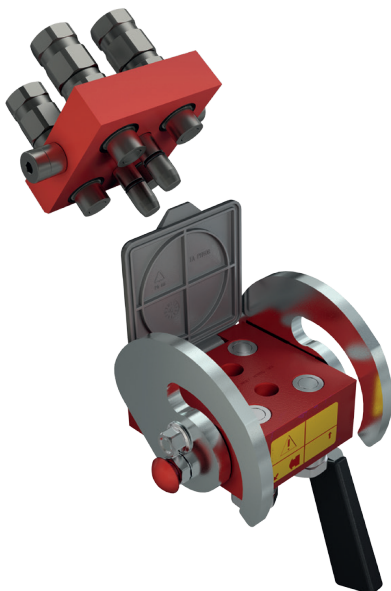


KIT3FN



Seal kits

PH408



MultiFaster for High Pressure applications.
4 lines, size 3/8".
Working pressure: 46 MPa.
Flow rate @ 0.2 MPa: 35 l/min.

Accessories and spares



KITFHB



KIT3FHP



Seal kits

PC206



MultiFaster compact. It allows connection with mobile plate or stand-alone counterpart couplings, 2 lines 3/8".

The disconnection of stand-alone counterpart couplings is made by dedicated push buttons.

This feature can be extended to all MultiFaster range.

Accessories and spares



KIT3FN



Seal kits

MultiGrease



MultiFaster with special cartridge for central lubrication system and an electrical connector (7 pins) included. 2 hydraulic lines, size 1/2".

Special grease coupling with shunt system can fitting 1/2" seat of all MultiFaster range.

Accessories and spares



KIT2FN



KIT3FN



KIT2FNGS



KIT2FNP12-18GM



KIT Spel

MultiFaster

P4A



MultiFaster 4 lines. 2 lines size 1",
2 lines size 1/2", available with
electrical connector in 1/2".
Working pressure: 25 MPa.
Flow rate @ 0.2 MPa: 2 lines 70 l/min,
2 linesw 150 l/min.

Accessories and spares



KIT2FN



KIT3FN



Seal kits

P506



MultiFaster 4 lines, size 3/8".
Working pressure: 25 MPa.
Flow rate @ 0.2 MPa: 40 l/min.

Accessories and spares



KIT2FN



KIT3FN



Seal kits

P10A



MultiFaster 10 lines. 5 lines size o4,
5 lines size o8.
Workig pressure: 25 MPa.
Flow rate @ 0.2 MPa: 5 lines 20 l/min,
5 lines 70 l/min.

Accessories and spares



KIT2FN



KIT3FN



Seal kits

Diagnostic and Check Valves

DF



Diagnostic Flat Face Male and Female couplings, specifically designed to measure the internal pressure of hydraulic circuits.

Male part to be mounted on the hydraulic line, Female part to be connected to gauge instruments. Available in size 1/4".

Interchangeable according to ISO 15171-1.

Accessories and spares



TFDF04

VU



Standard unidirectional check valves, acting as a safety device into hydraulic systems.

Standard versions contain a spring set to open the valve at 35 kPa; normally available with inlet and outlet Female threads.

Available sizes: 1/4", 3/8", 1/2", 3/4", 1", 1-1/4", 1-1/2", 2".

Wide range of calibrations available, from 10 to 950 kPa.

We are the global reference
in quick-release hydraulic couplings

Faster Srl
Via Ludovico Ariosto, 7
I-26027 Rivolta d'Adda
Cremona, Italy
T +39 0363 377211
F +39 0363 377333
info@fastercouplings.com
www.fastercouplings.com