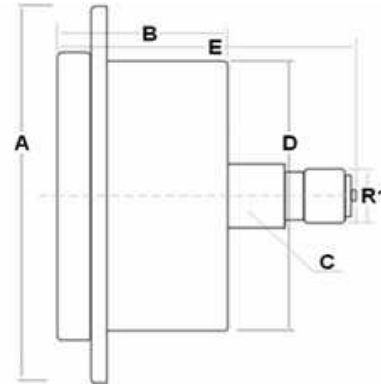


Pressure and vacuum gauges

Pressure gauges

Pressure gauge DN 63 rear connection with glycerin (1/4" BSP)

Page: 1/2



Accuracy: 1,6%

Dimensions: A=83
B=29
C=14
D=62
E=53

Temperature: from -10 up to +60

Material: Case: stainless steel 304
Ring: stainless steel 304
Window: polycarbonate (glass)
Socket & Connection: brass

Part n°	R1	Scale (bar)
MFI6304001-DB	1/4" BSP	0-1
MFI63042.5-DB	1/4" BSP	0-2.5
MFI6304004-DB	1/4" BSP	0-4
MFI6304006-DB	1/4" BSP	0-6
MFI6304010-DB	1/4" BSP	0-10
MFI6304012-DB	1/4" BSP	0-12
MFI6304016-DB	1/4" BSP	0-16
MFI6304020-DB	1/4" BSP	0-20
MFI6304025-DB	1/4" BSP	0-25
MFI6304040-DB	1/4" BSP	0-40
MFI6304060-DB	1/4" BSP	0-60
MFI6304100-DB	1/4" BSP	0-100
MFI6304160-DB	1/4" BSP	0-160

Pressure and vacuum gauges

Pressure gauges

Pressure gauge DN 63 rear connection with glycerin (1/4" BSP)

Page: 2/2

Part n°	R1	Scale (bar)
MF16304250-DB	1/4" BSP	0-250
MF16304315-DB	1/4" BSP	0-315
MF16304400-DB	1/4" BSP	0-400
MF16304600-DB	1/4" BSP	0-600

*** Review attached PDF***

With dual bar/psi scale